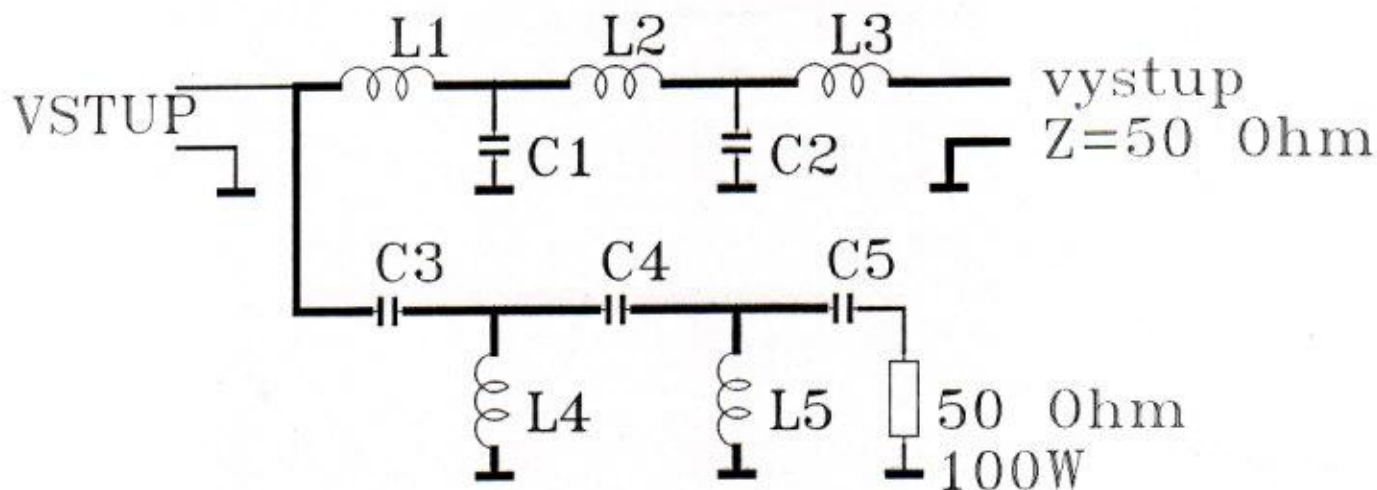


PASMO	L1	L2	L3	L4	L5	C1	C2	C3	C4	C5
3.5MHz	2.29uH	2.592uH	0.955uH	0.804uH	1.025uH	1061pF	832pF	372.4pF	329.2pF	893.5pF
7; 10.1	1.041uH	1.177uH	0.433uH	0.365uH	0.465uH	169.1pF	149.5pF	405.8pF	481.9pF	378pF
14;	0.68uH	0.72uH	0.36uH	0.34uH	0.42uH	280pF	230pF	96pF	86pF	233pF
18; 21	0.50uH	0.60uH	0.34uH	0.24uH	0.32uH	165pF	153pF	70pF	61pF	210pF
24; 28	0.38uH	0.48uH	0.32uH	0.27uH	0.32uH	108pF	105pF	33pF	33pF	195pF
1.8MHz	4.9uH	5.54uH	2.041uH	1.72uH	2.2uH	2270pF	1780pF	796pF	704pF	1910pF



TOROIDY :

VF VÝKON (W)	PÁSMO MHz	DOLNY PRIEPUST L1; L2; L3;	HORNY PRIEPUST L4; L5;
do 200W	1.8	T-106-2	T-80-2
	3.5	T-106-2	T-80-2
	7; 10;	T-106-2	T-80-2
	14;	T-106-6	T-80-2
	18; 21	T-106-6	T-50-2
	24; 28;	T-106-6	T-50-2
do 1000W	1.8	T-130-2	T-106-2
	3.5	T-130-2	T-106-2
	7; 10;	T-130-2	T-106-2
	14;	T-130-6	T-106-2
	18; 21;	T-130-6	T-106-2
	24; 28;	T-130-6	T-106-2
do 2500W	1.8; 3.5; 7; 10;	T-200-2	T-130-2
	14; 18; 21; 24; 28;	T-200-6	T-130-2